

Race	Candidate GOP/Dem/Ind	GOP Vote	Dem Vote	Ind Vote	Total Vote	GOP %	Dem %	Ind %	Rem %	Plurality/Win	%of Marg	GOP Index
<b>2000</b>												
Pres	Bush/GORE+	1,108,864	1,247,652	0	2,484,740*	44.6	50.2	0.0	5.2	138,788 D	5.6	0.0
<b>1996</b>												
Pres	Dole/CLINTON*/Perot	840,712	1,123,323	201,003	2,253,837*	37.3	49.8	8.9	3.9	282,611 d	12.5	0.0
<b>1992</b>												
Pres	Bush/CLINTON+/Perot	731,234	993,037	541,780	2,288,230*	32.0	43.4	23.7	1.0	261,803 d	11.4	0.0
<b>1988</b>												
Pres	Bush+/DUKAKIS	903,835	933,516	0	1,865,253*	48.5	50.1	0.0	1.5	29,681 D	1.6	0.0
<b>1984</b>												
Pres	REAGAN*/Mondale	1,051,670	807,352	0	1,883,910*	55.8	42.9	0.0	1.3	244,318 R	13.0	0.0
<b>1980</b>												
Pres	REAGAN+/Carter/Anderson	865,244	650,193	185,073	1,742,394*	49.7	37.3	10.6	2.4	215,051 r	12.3	0.0
<b>1976</b>												
Pres	FORD+/Carter	777,732	717,323	0	1,555,534*	50.0	46.1	0.0	3.9	60,409 R	3.9	0.0
<b>1972</b>												
Pres	NIXON/McGovern+	837,135	568,334	0	1,470,847*	56.9	38.6	0.0	4.4	268,801 R	18.3	0.0
<b>1968</b>												
Pres	Nixon/HUMPHREY+/Wallace	588,510	616,037	96,990	1,304,281*	45.1	47.2	7.4	0.2	27,527 d	2.1	0.0
<b>1964</b>												
Pres	Goldwater+/JOHNSON	470,366	779,881	0	1,258,556*	37.4	62.0	0.0	0.7	309,515 D	24.6	0.0
<b>1960</b>												
Pres	NIXON+/Kennedy	629,273	599,298	0	1,241,572*	50.7	48.3	0.0	1.1	29,975 R	2.4	0.0
<b>1956</b>												
Pres	EISENHOWER*/Stevenson	620,430	523,002	0	1,150,889*	53.9	45.4	0.0	0.7	97,428 R	8.5	0.0
<b>1952</b>												
Pres	EISENHOWER/Stevenson+	599,107	492,845	0	1,102,708*	54.3	44.7	0.0	1.0	106,262 R	9.6	0.0
<b>1948</b>												
Pres	Dewey/TRUMAN+	386,314	476,165	0	905,058*	42.7	52.6	0.0	4.7	89,851 D	9.9	0.0
<b>1944</b>												
Pres	Dewey/ROOSEVELT*	361,689	486,774	0	856,328*	42.2	56.8	0.0	0.9	125,085 D	14.6	0.0
<b>1940</b>												
Pres	Willkie/ROOSEVELT*	322,123	462,145	0	793,833*	40.6	58.2	0.0	1.2	140,022 D	17.6	0.0
<b>1936</b>												
Pres	Landon/ROOSEVELT*	206,892	459,579	0	692,338*	29.9	66.4	0.0	3.7	252,687 D	36.5	0.0
<b>1932</b>												
Pres	Hoover*/ROOSEVELT/Severa	208,645	353,260	52,909	614,814	33.9	57.5	8.6	0.0	144,615 D	23.5	0.0
<b>1928</b>												
Pres	HOOVER+/Smith	335,844	156,772	0	500,840*	67.1	31.3	0.0	1.6	179,072 R	35.8	0.0
<b>1924</b>												
Pres	COOLIDGE+/Davis/LaFollet	220,224	42,842	150,727	421,549*	52.2	10.2	35.8	1.8	69,497 R	16.5	0.0
<b>1920</b>												
Pres	HARDING/Cox+/Severa	223,137	84,298	91,280	398,715	56.0	21.1	22.9	0.0	131,857 R	33.1	0.0

POLIDATA © Demographic and Political Guides. All Rights Reserved. Copyright © 2003. www.polidata.us

1. Statewide Winner in UPPERCASE. Incumbency: \* for incumbent, + for party holding seat.

2. BOLDING indicates unit won by REPUBLICANS. Plurality in UPPERCASE indicates unit won with a majority of the vote.

3. Total column may include votes for minor party candidates. An asterisk (\*) follows the Total column if it includes votes not listed (see Rem%).

4. % of Marg(in) is Plurality as % of Total Vote. GOP Index (R-Dex) is the percentage (not percentage points) by which GOP% for County is above(+)/below(-) the State GOP%.

5. Order of races is standardized and may not match ballot order. Selected races only; non-competitive lower-ticket races may be omitted.

6. Each race is assigned a specific bar in the graphs. Top of the ticket is darkest bar and is at the left of each year cluster. Races not listed in the history table will result in blank bars.

Figure 1. TOTAL VOTES.

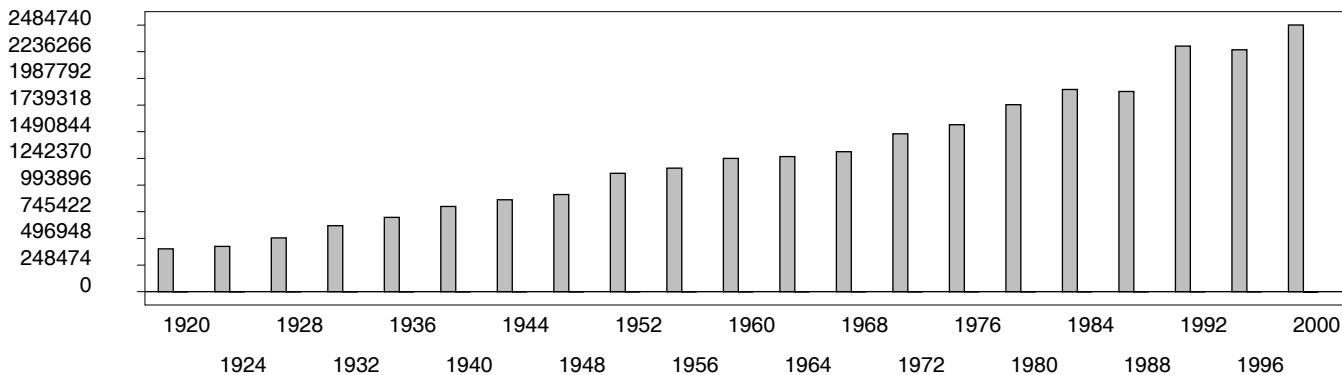


Figure 2. REPUBLICAN %. Refer to GOP-DEX for comparative value.

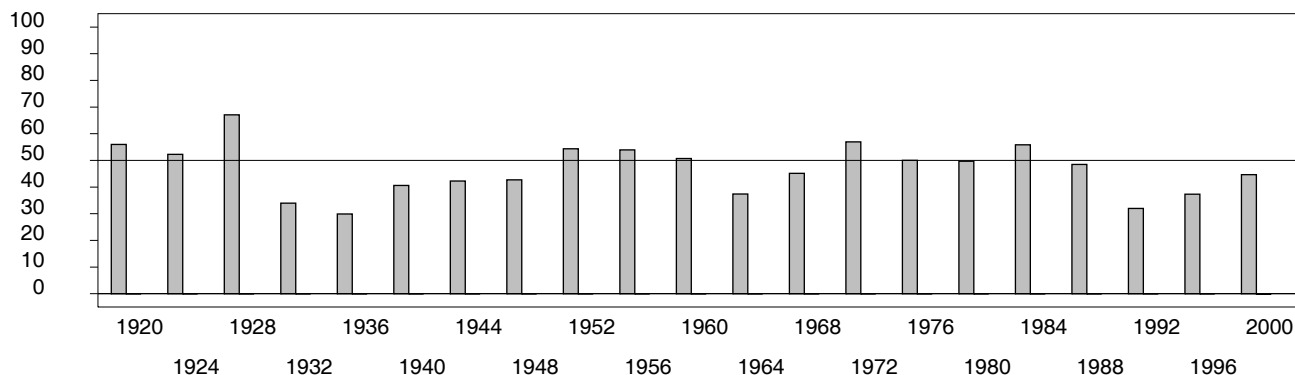


Figure 3. R-DEX: % by which County GOP% is above/below the State GOP%.

