

Race	Candidate GOP/Dem/Ind	GOP Vote	Dem Vote	Ind Vote	Total Vote	GOP %	Dem %	Ind %	Rem %	Plurality/Win	%of Marg	GOP Index
<b>2002</b>												
Sen	Wolfe/ROCKEFELLER*	160,902	275,281	0	436,183	36.9	63.1	0.0	0.0	114,379 D	26.2	0.0
<b>2000</b>												
Pres	BUSH/Gore+	336,475	295,497	0	648,123*	51.9	45.6	0.0	2.5	40,978 R	6.3	0.0
Gov	Underwood*/WISE	305,926	324,822	0	648,013*	47.2	50.1	0.0	2.7	18,896 D	2.9	0.0
<b>1996</b>												
Pres	Dole/CLINTON*/Perot	233,946	327,812	71,639	636,459*	36.8	51.5	11.3	0.5	93,866 D	14.8	0.0
Gov	UNDERWOOD/Pritt+	324,518	287,870	0	628,559*	51.6	45.8	0.0	2.6	36,648 R	5.8	0.0
Trs	Klos/PERDUE+	222,071	341,395	0	563,466	39.4	60.6	0.0	0.0	119,324 D	21.2	0.0
AtG	Lane/MCGRAW*	282,838	295,288	0	578,126	48.9	51.1	0.0	0.0	12,450 D	2.2	0.0
<b>1992</b>												
Pres	Bush/CLINTON+/Perot	241,974	331,001	108,829	683,762*	35.4	48.4	15.9	0.3	89,027 d	13.0	0.0
Gov	Benedict/CAPERTON*/Pritt	240,390	368,302	48,873	657,565	36.6	56.0	7.4	0.0	127,912 D	19.5	0.0
AtG	Gould/MCGRAW+	288,865	307,600	0	596,465	48.4	51.6	0.0	0.0	18,735 D	3.1	0.0
<b>1990</b>												
Trs	Martin/BAILEY+	138,266	226,626	0	364,892	37.9	62.1	0.0	0.0	88,360 D	24.2	0.0
<b>1988</b>												
Pres	Bush+/DUKAKIS	310,065	341,016	0	653,311*	47.5	52.2	0.0	0.3	30,951 D	4.7	0.0
Sen	Wolfe/BYRD*	223,564	410,983	0	634,547	35.2	64.8	0.0	0.0	187,419 D	29.5	0.0
Gov	Moore*/CAPERTON	267,172	382,421	0	649,593	41.1	58.9	0.0	0.0	115,249 D	17.7	0.0
Agrc	BENEDICT/Burke+	302,831	280,588	0	583,419	51.9	48.1	0.0	0.0	22,243 R	3.8	0.0
<b>1984</b>												
Pres	REAGAN/Mondale+	405,483	328,125	0	735,742*	55.1	44.6	0.0	0.3	77,358 R	10.5	0.0
Sen	Raese/ROCKEFELLER+	344,680	374,233	0	718,913	47.9	52.1	0.0	0.0	29,553 D	4.1	0.0
Sen	Raese/ROCKEFELLER+	344,680	374,233	0	718,913	47.9	52.1	0.0	0.0	29,553 D	4.1	0.0
Gov	MOORE/See+	394,937	346,565	0	741,502	53.3	46.7	0.0	0.0	48,372 R	6.5	0.0
Sec	Goldern/HECHLER+	247,080	434,488	0	681,568	36.3	63.8	0.0	0.0	187,408 D	27.5	0.0
AtG	McCuskey/BROWN+	309,763	386,442	0	696,205	44.5	55.5	0.0	0.0	76,679 D	11.0	0.0

1. Statewide Winner in UPPERCASE. Incumbency: \* for incumbent, + for party holding seat.

2. BOLDING indicates unit won by REPUBLICANS. Plurality in UPPERCASE indicates unit won with a majority of the vote.

3. Total column may include votes for minor party candidates. An asterisk (\*) follows the Total column if it includes votes not listed (see Rem%).

4. % of Marg(in) is Plurality as % of Total Vote. GOP Index (R-Dex) is the percentage (not percentage points) by which GOP% for County is above(+)/below(-) the State GOP%.

5. Order of races is standardized and may not match ballot order. Selected races only; non-competitive lower-ticket races may be omitted.

6. Each race is assigned a specific bar in the graphs. Top of the ticket is darkest bar and is at the left of each year cluster. Races not listed in the history table will result in blank bars.

Figure 1. TOTAL VOTES.

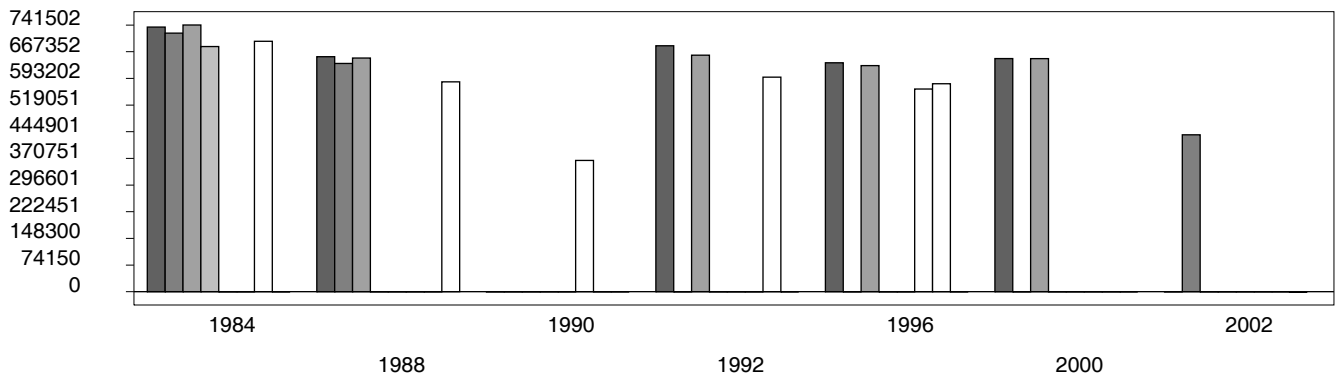


Figure 2. REPUBLICAN %. Refer to GOP-DEX for comparative value.

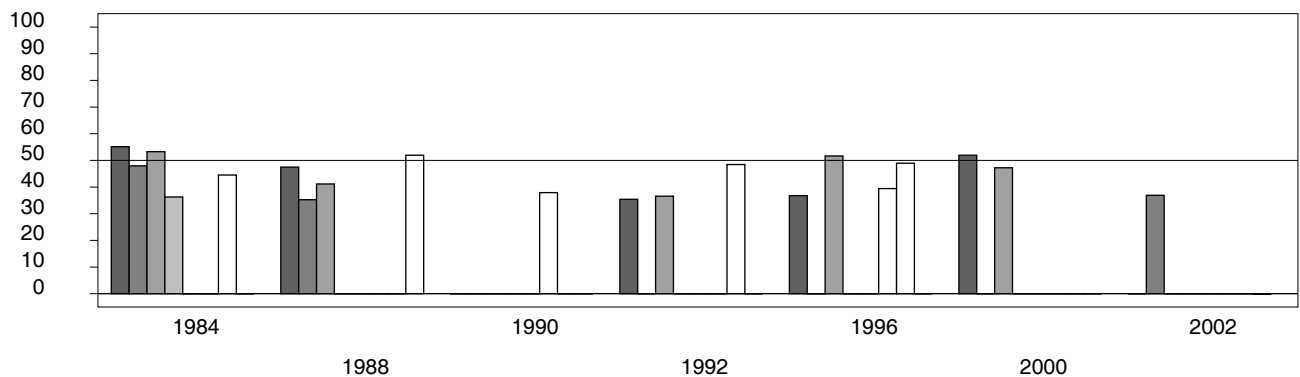


Figure 3. R-DEX: % by which County GOP% is above/below the State GOP%.



1. Statewide Winner in UPPERCASE. Incumbency: \* for incumbent, + for party holding seat.

2. BOLDING indicates unit won by REPUBLICANS. Plurality in UPPERCASE indicates unit won with a majority of the vote.

3. Total column may include votes for minor party candidates. An asterisk (\*) follows the Total column if it includes votes not listed (see Rem%).

4. % of Marg(in) is Plurality as % of Total Vote. GOP Index (R-Dex) is the percentage (not percentage points) by which GOP% for County is above(+)/below(-) the State GOP%.

5. Order of races is standardized and may not match ballot order. Selected races only; non-competitive lower-ticket races may be omitted.

6. Each race is assigned a specific bar in the graphs. Top of the ticket is darkest bar and is at the left of each year cluster. Races not listed in the history table will result in blank bars.