

Race	Candidate GOP/Dem/Ind	GOP Vote	Dem Vote	Ind Vote	Total Vote	GOP %	Dem %	Ind %	Rem %	Plurality/Win	%of Marg	GOP Index
2002												
Gov	McCallum+/DOYLE/Thompson	734,779	800,515	185,455	1,722,983*	41.4	45.2	10.5	3.0	65,736 d	3.7	0.0
Sec	Lorge/LAFOLLETTE*	693,476	950,929	0	1,679,155*	41.3	56.6	0.0	2.1	257,453 D	15.3	0.0
AtG	Biskupic/LAUTENSCHLAGER+	826,862	882,945	0	1,709,807	48.4	51.6	0.0	0.0	56,083 D	3.3	0.0
Trs	VOIGHT*/Sass/Aschenbrenn	824,049	720,445	114,955	1,659,449	49.7	43.4	6.9	0.0	103,604 r	6.3	0.0
2000												
Pres	Bush/GORE+	1,237,279	1,242,987	0	2,595,342*	47.7	47.9	0.0	4.4	5,708 d	0.2	0.0
Sen	Gillespie/KOHL*	940,744	1,563,238	0	2,539,181*	37.1	61.6	0.0	1.4	622,494 D	24.5	0.0
1998												
Sen	Neumann/FEINGOLD*	852,272	890,059	0	1,760,130*	48.4	50.6	0.0	1.0	37,787 D	2.2	0.0
Gov	THOMPSON*/Garvey	1,047,716	679,553	0	1,755,198*	59.7	38.7	0.0	1.6	368,163 R	21.0	0.0
Sec	Cross/LAFOLLETTE*	660,406	973,744	0	1,679,484*	39.3	58.0	0.0	2.7	313,338 D	18.7	0.0
Trs	VOIGHT*/Sass	814,380	754,177	0	1,628,570*	50.0	46.3	0.0	3.7	60,203 R	3.7	0.0
1996												
Pres	Dole/CLINTON*/Perot	845,029	1,071,971	227,339	2,196,169*	38.5	48.8	10.4	2.4	226,942 d	10.3	0.0
1994												
Sen	Welch/KOHL*	636,989	912,662	0	1,565,090*	40.7	58.3	0.0	1.0	275,673 D	17.6	0.0
Gov	THOMPSON*/Chvala	1,051,326	482,850	0	1,563,153*	67.3	30.9	0.0	1.9	568,476 R	36.4	0.0
Sec	Jackson/LAFOLLETTE*	590,666	845,742	0	1,482,943*	39.8	57.0	0.0	3.1	255,076 D	17.2	0.0
AtG	Wagner/DOYLE*	709,927	805,334	0	1,533,350*	46.3	52.5	0.0	1.2	95,407 D	6.2	0.0
Trs	VOIGHT+/Becker	812,795	557,212	0	1,444,618*	56.3	38.6	0.0	5.2	255,583 R	17.7	0.0
1992												
Pres	Bush/CLINTON+/Perot	930,855	1,041,066	544,479	2,531,114*	36.8	41.1	21.5	0.6	110,211 d	4.4	0.0
Sen	Kasten*/FEINGOLD	1,129,599	1,290,662	0	2,454,665*	46.0	52.6	0.0	1.4	161,063 D	6.6	0.0
1990												
Gov	T.THOMPSON*/Loftus	802,321	576,280	0	1,378,601	58.2	41.8	0.0	0.0	226,041 R	16.4	0.0
Sec	R.Thompson/LAFOLLETTE*	583,955	733,390	0	1,317,345	44.3	55.7	0.0	0.0	149,435 D	11.3	0.0
AtG	Hanaway*/DOYLE	635,835	687,283	0	1,351,066*	47.1	50.9	0.0	2.1	51,448 D	3.8	0.0
Trs	ZEUSKE/Smith*	623,548	609,505	0	1,280,271*	48.7	47.6	0.0	3.7	14,043 r	1.1	0.0
1988												
Pres	Bush+/DUKAKIS	1,047,499	1,126,794	0	2,191,608*	47.8	51.4	0.0	0.8	79,295 D	3.6	0.0
Sen	Engeleiter/KOHL+	1,030,440	1,128,625	0	2,167,257*	47.6	52.1	0.0	0.4	98,185 D	4.5	0.0
1986												
Sen	KASTEN*/Garvey	754,573	702,963	0	1,481,962*	50.9	47.4	0.0	1.7	51,610 R	3.5	0.0
Gov	THOMPSON/Earl*	805,090	705,578	0	1,526,572*	52.7	46.2	0.0	1.0	99,512 R	6.5	0.0
Sec	Krueger/D.LAFOLLETTE*	670,672	754,032	0	1,448,189*	46.3	52.1	0.0	1.6	83,360 D	5.8	0.0
AtG	HANAWAY/B.LaFollette*	751,208	664,181	0	1,445,844*	52.0	45.9	0.0	2.1	87,027 R	6.0	0.0
Trs	Lorge/SMITH*	601,432	725,009	0	1,376,418*	43.7	52.7	0.0	3.6	123,577 D	9.0	0.0
1984												
Pres	REAGAN*/Mondale	1,198,584	995,740	0	2,211,689*	54.2	45.0	0.0	0.8	202,844 R	9.2	0.0
1982												
Sen	McCallum/PROXMIRE*	527,355	983,311	0	1,544,883*	34.1	63.7	0.0	2.2	455,956 D	29.5	0.0
Gov	Kohler+/EARL	662,738	896,872	0	1,580,090*	41.9	56.8	0.0	1.3	234,134 D	14.8	0.0
Trs	Clemens/SMITH*	586,876	841,792	0	1,448,908*	40.5	58.1	0.0	1.4	254,916 D	17.6	0.0
1980												
Pres	REAGAN/Carter*/Anderson	1,088,845	981,584	160,657	2,273,221*	47.9	43.2	7.1	1.9	107,261 r	4.7	0.0

POLIDATA © Demographic and Political Guides. All Rights Reserved. Copyright © 2003. www.polidata.us

1. Statewide Winner in UPPERCASE. Incumbency: * for incumbent, + for party holding seat. WI: Lieutenant Governor is elected on same ticket with Governor.

2. BOLDING indicates unit won by REPUBLICANS. Plurality in UPPERCASE indicates unit won with a majority of the vote.

3. Total column may include votes for minor party candidates. An asterisk (*) follows the Total column if it includes votes not listed (see Rem%).

4. % of Marg(in) is Plurality as % of Total Vote. GOP Index (R-Dex) is the percentage (not percentage points) by which GOP% for County is above(+)/below(-) the State GOP%.

5. Order of races is standardized and may not match ballot order. Selected races only; non-competitive lower-ticket races may be omitted.

6. Each race is assigned a specific bar in the graphs. Top of the ticket is darkest bar and is at the left of each year cluster. Races not listed in the history table will result in blank bars.

Figure 1. TOTAL VOTES.

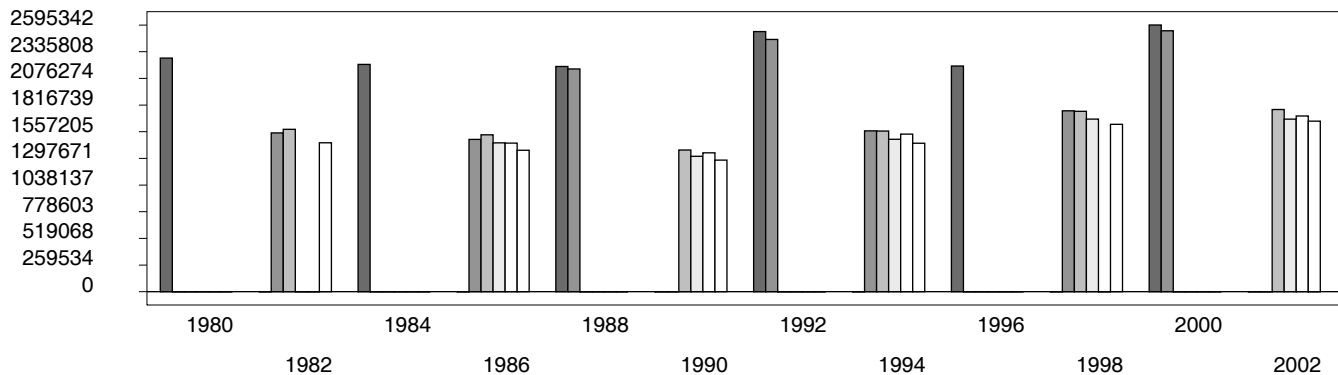


Figure 2. REPUBLICAN %. Refer to GOP-DEX for comparative value.

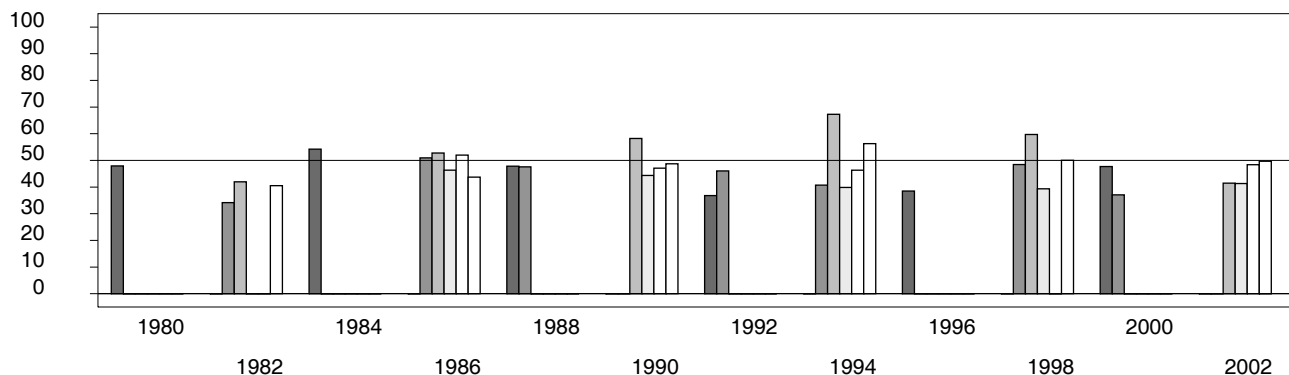


Figure 3. R-DEX: % by which County GOP% is above/below the State GOP%.

