

Race	Candidate GOP/Dem/Ind	GOP Vote	Dem Vote	Ind Vote	Total Vote	GOP %	Dem %	Ind %	Rem %	Plurality/Win	%of Marg	GOP Index
2000												
Pres	Bush/GORE+	1,237,279	1,242,987	0	2,595,342*	47.7	47.9	0.0	4.4	5,708 d	0.2	0.0
1996												
Pres	Dole/CLINTON*/Perot	845,029	1,071,971	227,339	2,196,169*	38.5	48.8	10.4	2.4	226,942 d	10.3	0.0
1992												
Pres	Bush/CLINTON+/Perot	930,855	1,041,066	544,479	2,531,114*	36.8	41.1	21.5	0.6	110,211 d	4.4	0.0
1988												
Pres	Bush+/DUKAKIS	1,047,499	1,126,794	0	2,191,608*	47.8	51.4	0.0	0.8	79,295 D	3.6	0.0
1984												
Pres	REAGAN*/Mondale	1,198,584	995,740	0	2,211,689*	54.2	45.0	0.0	0.8	202,844 R	9.2	0.0
1980												
Pres	REAGAN/Carter*/Anderson	1,088,845	981,584	160,657	2,273,221*	47.9	43.2	7.1	1.9	107,261 r	4.7	0.0
1976												
Pres	Ford+/CARTER	1,004,987	1,040,232	0	2,104,175*	47.8	49.4	0.0	2.8	35,245 d	1.7	0.0
1972												
Pres	NIXON*/McGovern	989,430	810,174	0	1,852,890*	53.4	43.7	0.0	2.9	179,256 R	9.7	0.0
1968												
Pres	NIXON/Humphrey+/Wallace	809,997	748,804	127,835	1,691,538*	47.9	44.3	7.6	0.3	61,193 r	3.6	0.0
1964												
Pres	Goldwater+/JOHNSON	638,495	1,050,424	0	1,691,815*	37.7	62.1	0.0	0.2	411,929 D	24.4	0.0
1960												
Pres	NIXON+/Kennedy	895,175	830,805	0	1,729,082*	51.8	48.1	0.0	0.2	64,370 R	3.7	0.0
1956												
Pres	EISENHOWER*/Stevenson	954,844	586,768	0	1,550,558*	61.6	37.8	0.0	0.6	368,076 R	23.7	0.0
1952												
Pres	EISENHOWER/Stevenson+	979,744	622,175	0	1,607,370*	61.0	38.7	0.0	0.3	357,569 R	22.2	0.0
1948												
Pres	Dewey*/TRUMAN	590,959	647,310	0	1,276,800*	46.3	50.7	0.0	3.0	56,351 D	4.4	0.0
1944												
Pres	DEWEY/Roosevelt*	674,532	650,413	0	1,339,152*	50.4	48.6	0.0	1.1	24,119 R	1.8	0.0
1940												
Pres	Willkie/ROOSEVELT*	679,206	704,821	0	1,405,522*	48.3	50.2	0.0	1.5	25,615 D	1.8	0.0
1936												
Pres	Landon/ROOSEVELT*	380,828	802,984	0	1,258,560*	30.3	63.8	0.0	5.9	422,156 D	33.5	0.0
1932												
Pres	Hoover*/ROOSEVELT	347,741	707,410	0	1,114,814*	31.2	63.5	0.0	5.4	359,669 D	32.3	0.0
1928												
Pres	HOOVER/Smith	544,205	450,259	0	1,016,831*	53.5	44.3	0.0	2.2	93,946 R	9.2	0.0
1924												
Pres	Coolidge+/Davis/LAFOLLET	311,614	68,115	453,678	840,827*	37.1	8.1	54.0	0.9	142,064 O	16.9	0.0
1920												
Pres	HARDING+/Cox/Debs	498,576	113,422	89,283	701,281	71.1	16.2	12.7	0.0	385,154 R	54.9	0.0

POLIDATA © Demographic and Political Guides. All Rights Reserved. Copyright © 2003. www.polidata.us

1. Statewide Winner in UPPERCASE. Incumbency: * for incumbent, + for party holding seat. WI: Lieutenant Governor is elected on same ticket with Governor.

2. BOLDING indicates unit won by REPUBLICANS. Plurality in UPPERCASE indicates unit won with a majority of the vote.

3. Total column may include votes for minor party candidates. An asterisk (*) follows the Total column if it includes votes not listed (see Rem%).

4. % of Marg(in) is Plurality as % of Total Vote. GOP Index (R-Dex) is the percentage (not percentage points) by which GOP% for County is above(+)/below(-) the State GOP%.

5. Order of races is standardized and may not match ballot order. Selected races only; non-competitive lower-ticket races may be omitted.

6. Each race is assigned a specific bar in the graphs. Top of the ticket is darkest bar and is at the left of each year cluster. Races not listed in the history table will result in blank bars.

Figure 1. TOTAL VOTES.

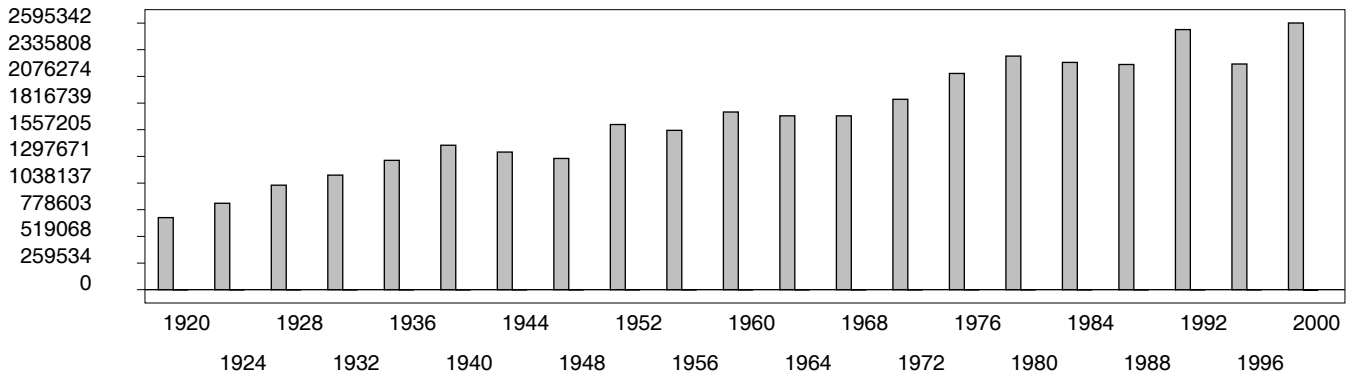


Figure 2. REPUBLICAN %. Refer to GOP-DEX for comparative value.

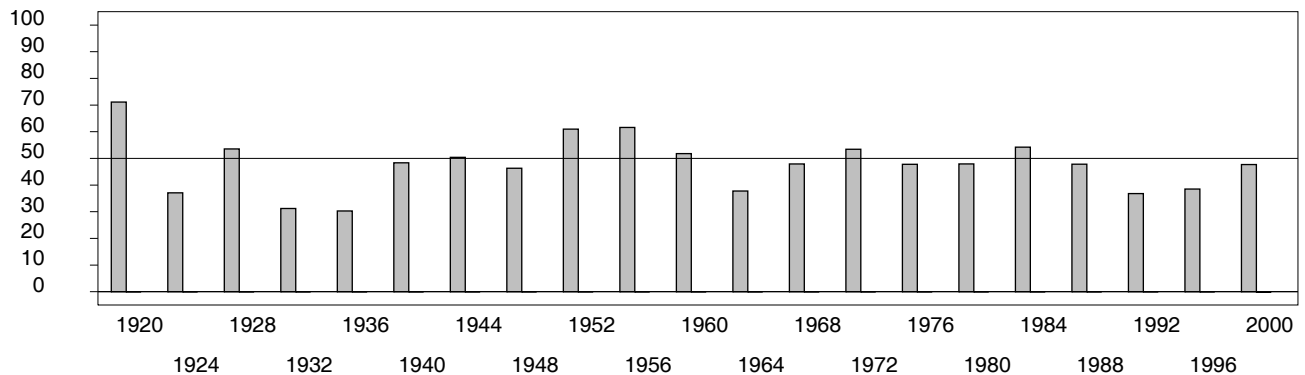


Figure 3. R-DEX: % by which County GOP% is above/below the State GOP%.



1. Statewide Winner in UPPERCASE. Incumbency: * for incumbent, + for party holding seat. WI: Lieutenant Governor is elected on same ticket with Governor.
2. BOLDING indicates unit won by REPUBLICANS. Plurality in UPPERCASE indicates unit won with a majority of the vote.
3. Total column may include votes for minor party candidates. An asterisk (*) follows the Total column if it includes votes not listed (see Rem%).
4. % of Marg(in) is Plurality as % of Total Vote. GOP Index (R-Dex) is the percentage (not percentage points) by which GOP% for County is above(+)/below(-) the State GOP%.
5. Order of races is standardized and may not match ballot order. Selected races only; non-competitive lower-ticket races may be omitted.
6. Each race is assigned a specific bar in the graphs. Top of the ticket is darkest bar and is at the left of each year cluster. Races not listed in the history table will result in blank bars.

[55000VHB-psvhy21-CH11]