

Race	Candidate GOP/Dem/Ind	GOP Vote	Dem Vote	Ind Vote	Total Vote	GOP %	Dem %	Ind %	Rem %	Plurality/Win	%of Marg	GOP Index
<b>2000</b>												
Pres	BUSH+/Gore	147,947	60,481	0	213,726*	69.2	28.3	0.0	2.5	87,466 R	40.9	0.0
<b>1996</b>												
Pres	DOLE+/Clinton/Perot	105,388	77,934	25,928	211,571*	49.8	36.8	12.3	1.1	27,454 r	13.0	0.0
<b>1992</b>												
Pres	BUSH*/Clinton/Perot	79,347	68,160	51,263	200,598*	39.6	34.0	25.6	0.9	11,187 r	5.6	0.0
<b>1988</b>												
Pres	BUSH+/Dukakis	106,867	67,113	0	176,551*	60.5	38.0	0.0	1.5	39,754 R	22.5	0.0
<b>1984</b>												
Pres	REAGAN*/Mondale	133,241	53,370	0	188,968*	70.5	28.2	0.0	1.3	79,871 R	42.3	0.0
<b>1980</b>												
Pres	REAGAN+/Carter/Anderson	110,700	49,427	12,072	176,713*	62.6	28.0	6.8	2.6	61,273 R	34.7	0.0
<b>1976</b>												
Pres	FORD+/Carter	92,717	62,239	0	156,343*	59.3	39.8	0.0	0.9	30,478 R	19.5	0.0
<b>1972</b>												
Pres	NIXON*/McGovern	100,464	44,358	0	145,570*	69.0	30.5	0.0	0.5	56,106 R	38.5	0.0
<b>1968</b>												
Pres	NIXON/Humphrey+/Wallace	70,927	45,173	11,105	127,205	55.8	35.5	8.7	0.0	25,754 R	20.3	0.0
<b>1964</b>												
Pres	Goldwater+/JOHNSON	61,998	80,718	0	142,716	43.4	56.6	0.0	0.0	18,720 D	13.1	0.0
<b>1960</b>												
Pres	NIXON*/Kennedy	77,451	63,331	0	140,782	55.0	45.0	0.0	0.0	14,120 R	10.0	0.0
<b>1956</b>												
Pres	EISENHOWER*/Stevenson	74,573	49,554	0	124,127	60.1	39.9	0.0	0.0	25,019 R	20.2	0.0
<b>1952</b>												
Pres	EISENHOWER/Stevenson+	81,049	47,934	0	129,253*	62.7	37.1	0.0	0.2	33,115 R	25.6	0.0
<b>1948</b>												
Pres	Dewey*/TRUMAN	47,947	52,354	0	101,425*	47.3	51.6	0.0	1.1	4,407 D	4.4	0.0
<b>1944</b>												
Pres	DEWEY/Roosevelt*	51,921	49,419	0	101,340	51.2	48.8	0.0	0.0	2,502 R	2.5	0.0
<b>1940</b>												
Pres	Willkie/ROOSEVELT*	52,633	59,287	0	112,240*	46.9	52.8	0.0	0.3	6,654 D	5.9	0.0
<b>1936</b>												
Pres	Landon/ROOSEVELT*	38,739	62,624	0	103,382*	37.5	60.6	0.0	2.0	23,885 D	23.1	0.0
<b>1932</b>												
Pres	Hoover*/ROOSEVELT	39,583	54,370	0	96,962*	40.8	56.1	0.0	3.1	14,787 D	15.3	0.0
<b>1928</b>												
Pres	HOOVER*/Smith	52,748	29,299	0	82,835*	63.7	35.4	0.0	1.0	23,449 R	28.3	0.0
<b>1924</b>												
Pres	COOLIDGE+/Davis/LaFollet	41,858	12,868	25,174	79,900	52.4	16.1	31.5	0.0	16,684 R	20.9	0.0
<b>1920</b>												
Pres	HARDING/Cox+	35,091	17,429	0	56,253*	62.4	31.0	0.0	6.6	17,662 R	31.4	0.0

POLIDATA © Demographic and Political Guides. All Rights Reserved. Copyright © 2003. www.polidata.us

1. Winner in UPPERCASE. Incumbency: \* for incumbent, + for party holding seat.

2. BOLDING indicates unit won by REPUBLICANS. Plurality in UPPERCASE indicates party which won unit won with a majority of the vote.

3. Total column may include votes for minor party candidates. An asterisk (\*) follows the Total column if it includes votes not listed (see Rem%).

4. % of Marg(in) is Plurality as % of Total Vote. GOP Index (R-Dex) is the percentage (not percentage points) by which GOP% for County is above(+)/below(-) the State GOP%.

5. Order of races is standardized and may not match ballot order. Selected races only; non-competitive lower-ticket races may be omitted.

6. Each race is assigned a specific bar in the graphs. Top of the ticket is darkest bar and is at the left of each year cluster. Races not listed in the history table will result in blank bars.

Figure 1. TOTAL VOTES.

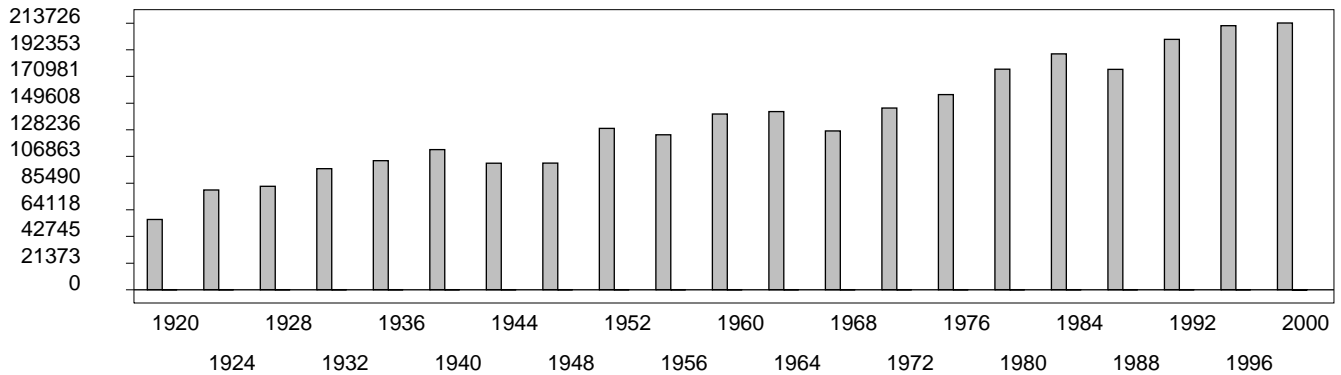


Figure 2. REPUBLICAN %. Refer to GOP-DEX for comparative value.

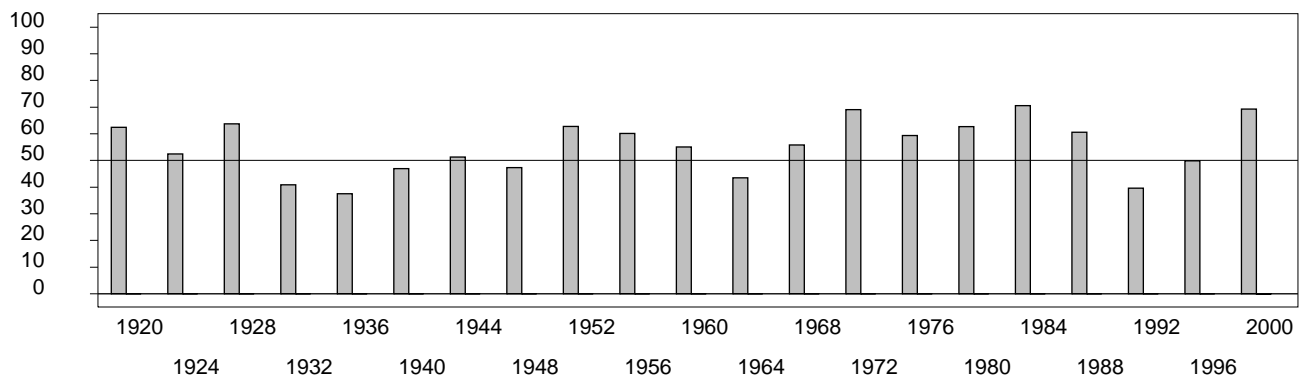


Figure 3. R-DEX: % by which County GOP% is above/below the State GOP%.



1. Winner in UPPERCASE. Incumbency: \* for incumbent, + for party holding seat.
2. BOLDING indicates unit won by REPUBLICANS. Plurality in UPPERCASE indicates party which won unit won with a majority of the vote.
3. Total column may include votes for minor party candidates. An asterisk (\*) follows the Total column if it includes votes not listed (see Rem%).
4. % of Marg(in) is Plurality as % of Total Vote. GOP Index (R-Dex) is the percentage (not percentage points) by which GOP% for County is above(+)/below(-) the State GOP%.
5. Order of races is standardized and may not match ballot order. Selected races only; non-competitive lower-ticket races may be omitted.
6. Each race is assigned a specific bar in the graphs. Top of the ticket is darkest bar and is at the left of each year cluster. Races not listed in the history table will result in blank bars.

[56000VHB-psvhcy21-CB20]